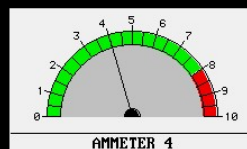
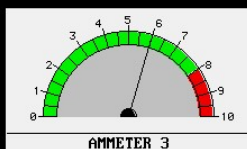
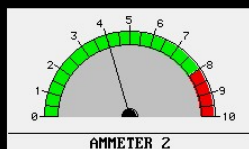
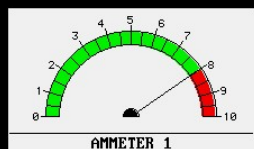
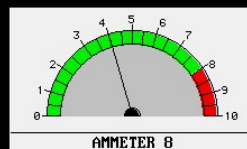
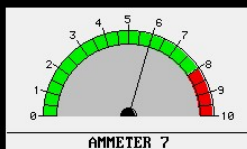
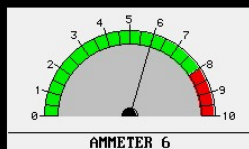
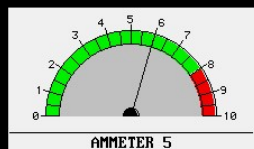


PlantView by KVC, Inc



325
TEMPERATURE 1



326
TEMPERATURE 2

325
TEMPERATURE 3

80
TANK 1 LEVEL (%)

60
TANK 2 LEVEL (%)

292
TEMPERATURE 4

AMMETER 1 IS OVER AMP LIMIT OF MOTOR

HotMixService.com

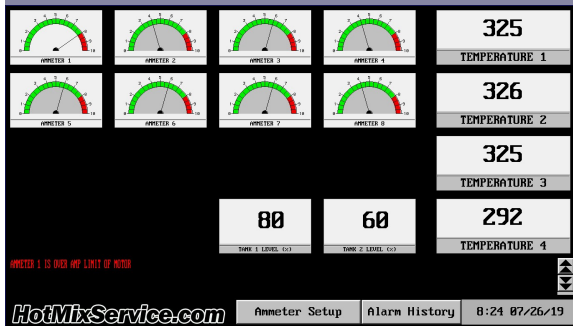
Ammeter Setup

Alarm History

8:24 07/26/19

Virtually Unlimited Ammeter and Temperature Monitoring
Motor Status Monitoring
Tank and Silo Level Monitoring
Hot Oil Heater Control and Monitoring

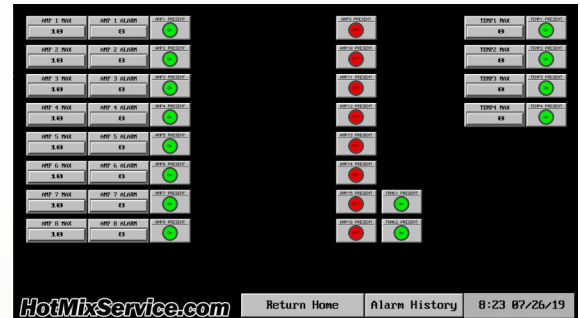
www.hotmixservice.com



PlantView utilizes the most up to date technology to gather information that you need and displays it to your operator in real time.

From 4 to 96 inputs available in the base system and virtually unlimited expansion utilizing Allen Bradley's Remote IO, Plant View is capable of capturing all of the data your plant produces and present it in such a way that your operator it is not overwhelmed.

Intuitive menu designs, easy to follow setup instructions and live over the internet set-up and calibration assistance set this system apart from anything out there.



Options to start and enough power to keep you moving

- Motor Ammeters
- Plant Temperatures
- Liquid AC Tank Level (In %)
- Silo Level (In %)
- Motor Status (Running, Stopped, Tripped)
- CFB\RAP Bin Flow\No Flow
- Hot Oil Heater Monitoring and Notifications

Ammeter\Temperatures

Solid and Split Core Current Transducers from 1 to 400 amps provides exceptional range and customization. Temperature Signals are intercepted from current plant thermocouples and prominently displayed in PlantView for quick and easy viewing.

Silo and Tank Levels

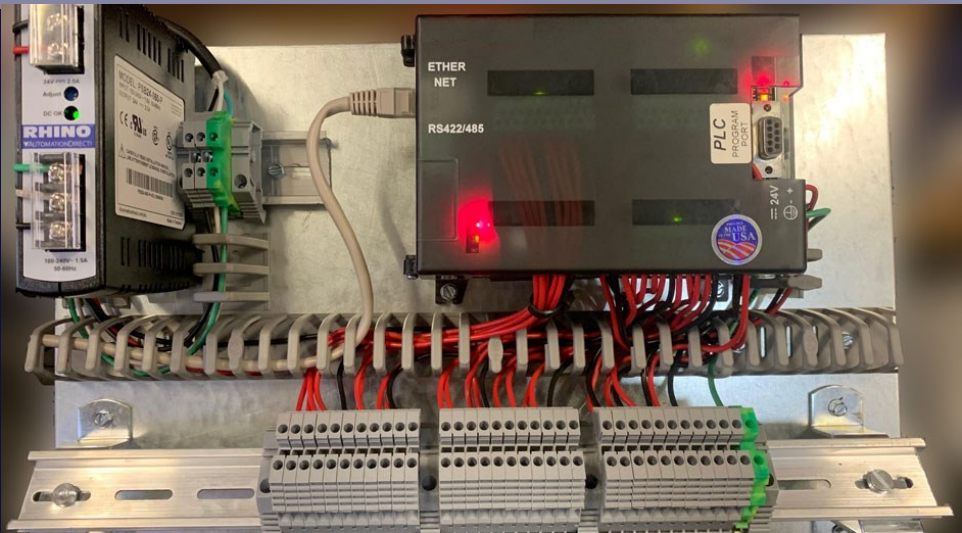
Siemens LR560 Radar Level Sensors provide fast accurate measurements in the harsh asphalt plant environment. Siemens Pressure Gauges available for certain AC Tank configurations

Motor Status and Sensor Monitoring

Intercepting existing wiring or utilizing unused terminals on existing contactors we are able to provide basic motor status as a visual backup and logging purposes giving managers an exact log of what happened and when it happened if something breaks

Hot Oil Heater Control or Monitor

Think of your standard Hot Oil Heater Monitor System and then imagine that on steroids. Smart Phone Capable with a dedicated app allows viewing of instant data from your Hot Oil Heater and instant notification via text message if something isn't right. For complete control our retrofit kit replaces the guts of your Hot Oil Heater control system with a up to date PLC based system that gives you even more control



Base System

The Base System consists a modular PLC and associated wiring terminals and power supplies, 12ea 0-10 Amp Current Transducers, 4ea 0-20 Amp Current Transducers and a input card for up to 4 temperature readouts. The PLC is connected to a 23 inch widescreen all in one computer via high speed ethernet cable. Price includes all required software preinstalled on PC, program customization, and over the internet final setup. Installation of hardware not included.

Base System.....\$3,590.00

Options

<u>Current Transducer Upgrade</u> (To Replace Base System Transducers)	
0-50 or 0-100 Amp Solid Core	\$65.00
0-100, 0-150, 0-200 Amp Split Core	\$95.00
Tank and Silo Radar Gauge	\$3,500.00

<u>Additional Modules</u> (Does not Include Transducer, Radar, or Pressure Gauge Select from Above)	
Up to 8 Additional Ammeters (Total of 24)	\$495.00
Up to 16 Additional Ammeters (Total of 32)	\$900.00
Up to 24 Additional Ammeters (Total of 40)	\$1,700.00
Up to 4 Additional Thermocouple Inputs	\$525.00
Up to 4 Tank Level or Silo Inputs (4-20ma)	\$525.00

Motor Status, Sensor Monitoring, Hot Oil Heater

Call for a Personalized Quote 1-406-285-8525



www.hotmixservice.com

Kootenai Valley Contractors, Inc.

1516 Utah Ave
Libby, MT 59923

406.285.8525 ph
sales@hotmixservice.com